

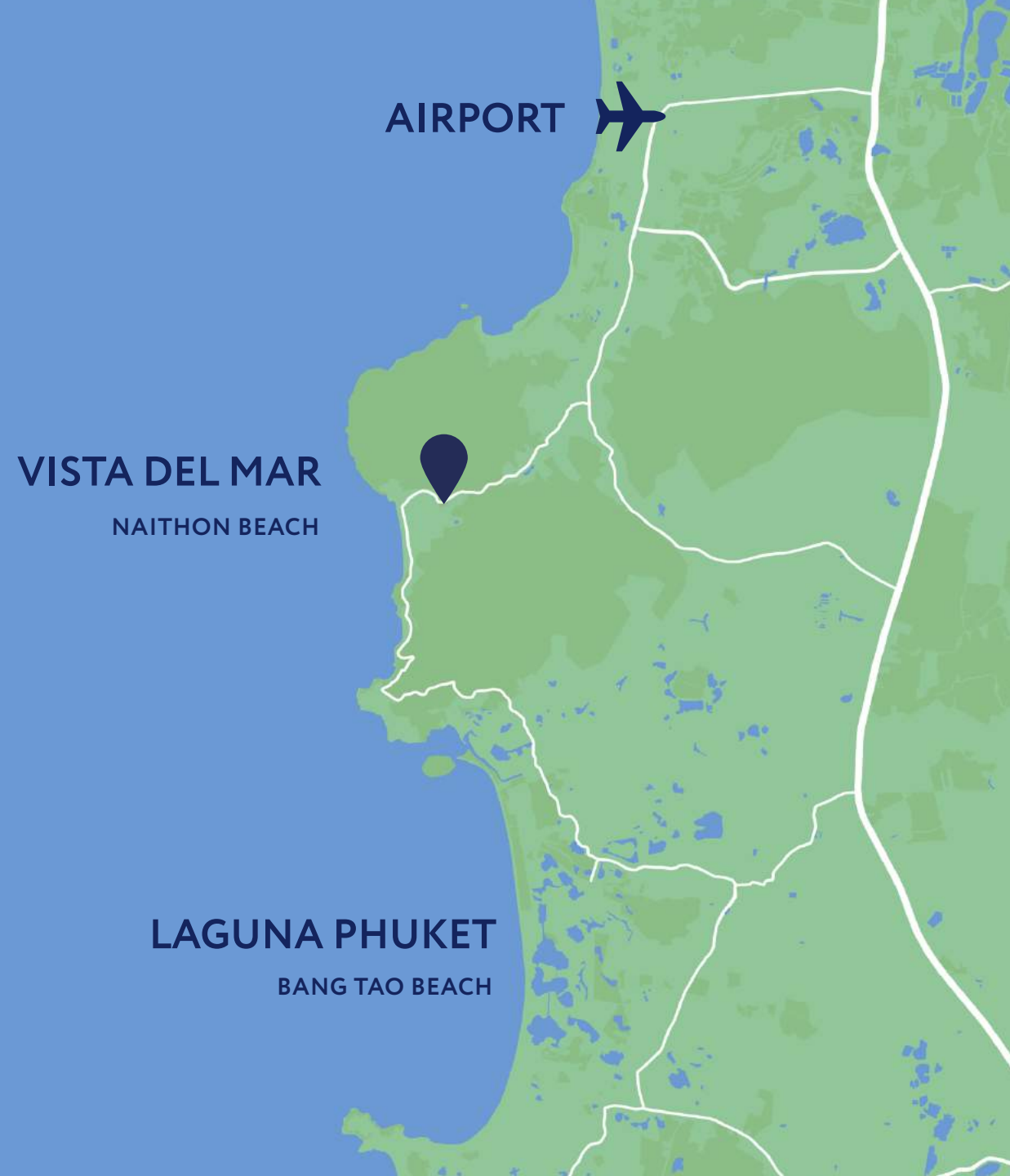


Exclusive sea-view villas
at Naithon beach

Vista del Mar
— PHUKET —

Location

- 15 minutes to the Airport
- 20 minutes to Laguna / Boat Avenue: upscale dining and shopping area
- 20 minutes to golf courses, world-class yacht marinas, and major dining, entertainment, and shopping areas.



Naithon Beach

Vista del Mar is located at Naithon beach—one of the best yet secluded beaches on Phuket’s most desirable North-West coast.

Naithon beach is a beautiful one-kilometer stretch of soft white sand lined with Casuarina trees along the crystal clear Andaman Sea. An idyllic tropical paradise surrounded by some of the island’s most impressive virgin jungle mountains, part of which forms Sirinat National Park.

Naithon offers just a couple of luxury villa developments and upscale boutique hotels like Pullman and Trisara with spa, fitness, and other facilities—to complement its natural tropical beauty. There are a dozen picturesque local restaurants and shops along the beach.





Vista del Mar
PHUKET
LUXURY SEA VIEW VILLAS FOR SALE

Overview

[LINK TO VIDEO](#)

Vista del Mar villas are carefully nestled on the slope of the green hill, to allow superb sea and sunset views from each villa.

10 villas have been sold, most of them inhabited by the owners or rented out. 10 more villas are to be built by 2024.





Naithon Beach
600 m



Vista del Mar
PHUKET



600

meters to Naithon
beach



17 000

m² project's area with
landscape design



45...70

meters above the sea,
panoramic ocean view
from each villa



Fantastic sunsets—
all villas are west-oriented



On-site office and management team:
maintenance of common areas
and the full range of services



24/7 manned security and CCTV



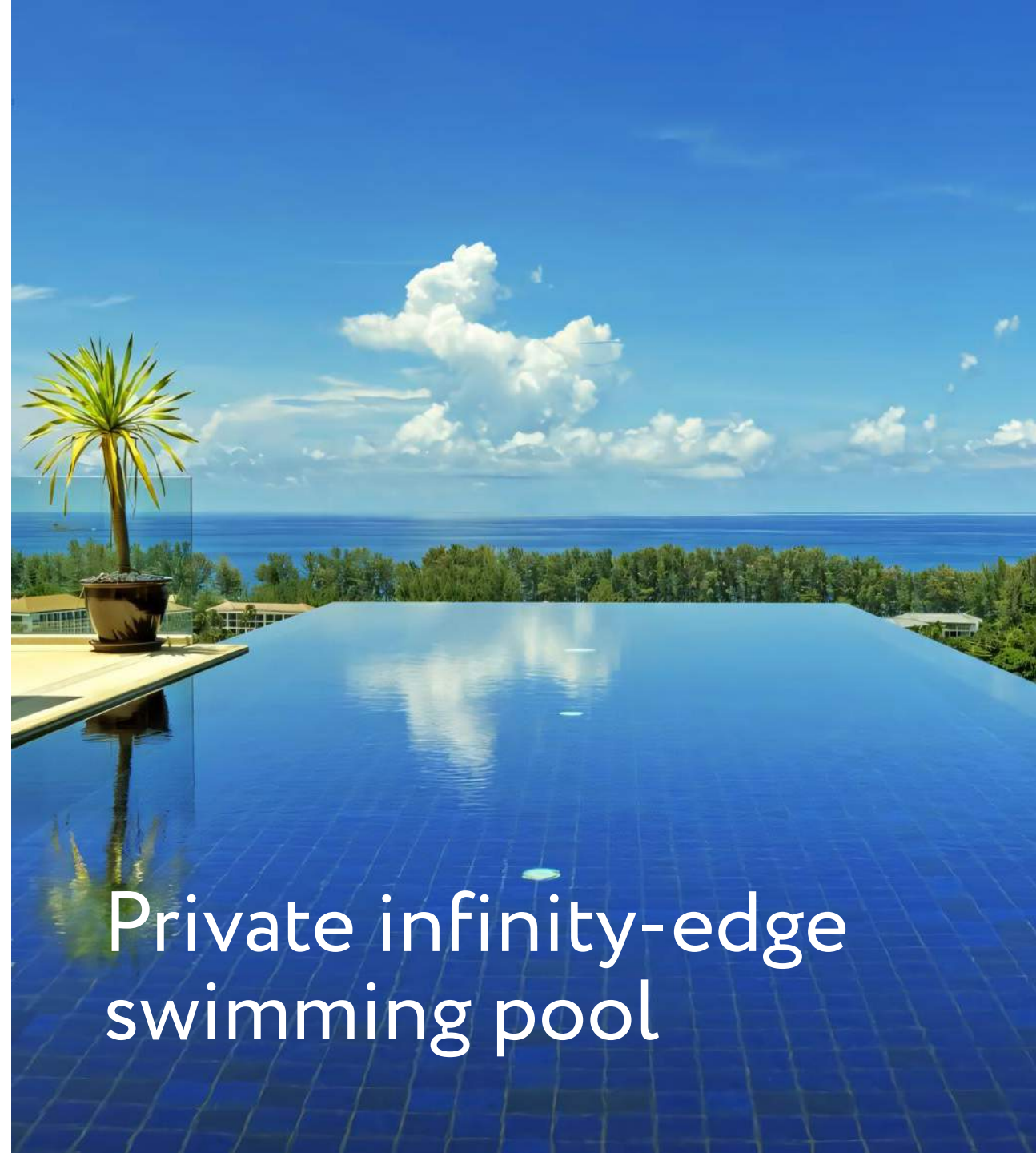
A rental program is available for all owners:
our team successfully manages more than
20 properties on the island



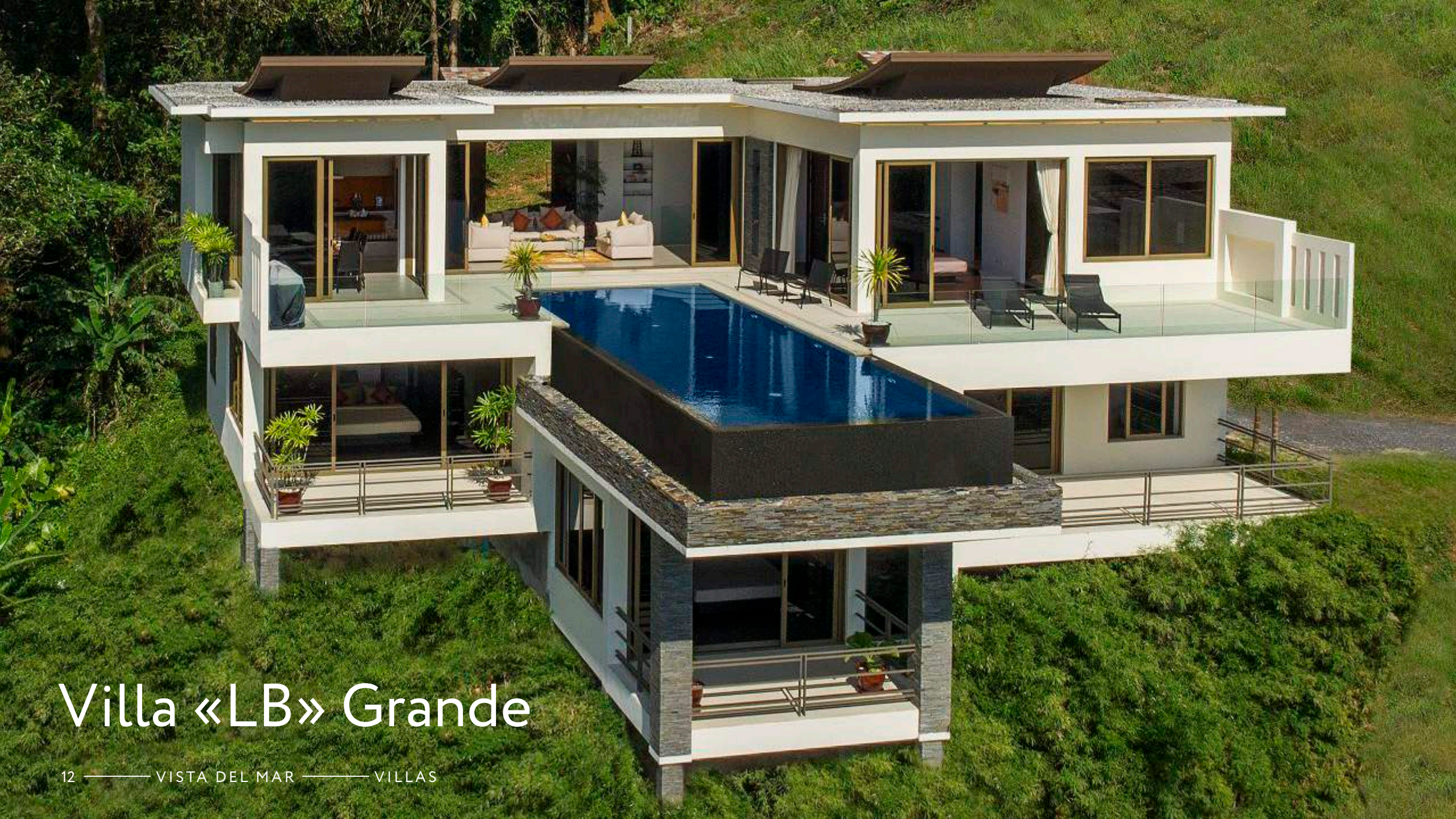
Beach club

Villas

- 300–700 m² total area
- Two levels with 3–4 bedrooms
- Extended sundecks with BBQ area
- Open-space living and dining areas
- Fully equipped hi-end kitchen
- Zoned air conditioning, panoramic windows
- Walk-in wardrobes and extensive top-notch bathrooms in each bedroom
- Covered parking
- Villas are finished with built-in furniture and landscape design
- Freestanding furniture and décor package is optional



Private infinity-edge
swimming pool



Villa «LB» Grande

Villa «LB» Grande

4 bedrooms

700 m² Total area

330 m² Internal

370 m² External



Villa «LB» Grande

4 bedrooms

[LINK TO VIDEO](#)

An impressive 700 square meters over two levels of this villa make it a large and spacious family home and an exceptional venue for big parties.

LB villas are located on the upper part of the development and offer fantastic sea views.

An alluring entrance with fountains leads from a covered carpark directly to the upper (main) level of your villa. Here you find 12×4 meters private infinity swimming pool, a large terrace all around the pool with a BBQ zone, a spacious master bedroom with walk-in

wardrobe and extensive bathroom; open space kitchen, dining, and living areas.

The lower floor offers three guest bedrooms with en-suite bathrooms and walk-in wardrobes and private terraces.









Villa «LB» Grande

4 bedrooms

700 m²
Total area

330 m²
Internal

370 m²
External





Villa «LM/LS» Monte

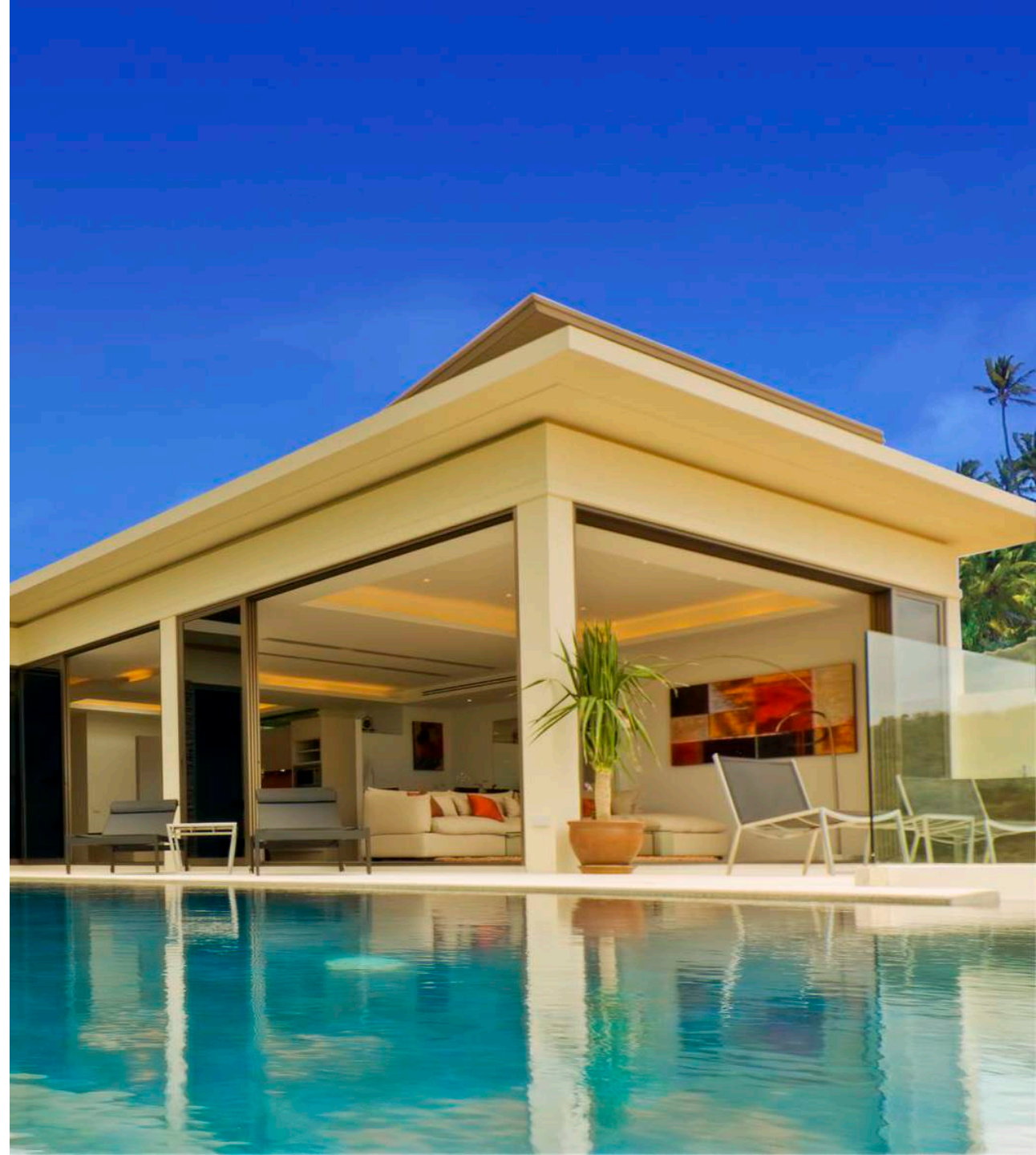
Villa «LM/LS» Monte

4 bedrooms

580 m² Total area

310 m² Internal

270 m² External



Villa «LM/LS» Monte

4 bedrooms

These lovely villas comprise a total area of about 580 square meters of well-arranged floor space with a two-level layout similar to LB villas.

LM and LS villas are located in the middle part of the development and offer great sea and mountain views.

Here you find 12×4 meters private infinity swimming pool, a spacious terrace along the pool with BBQ and sun chairs, a pool-view master bedroom with a walk-in wardrobe and extensive bathroom; open space kitchen, dining, and living area.

The lower floor offers an additional living room and three guest bedrooms with en-suite bathrooms, walk-in wardrobes, and private terraces.









Villa «LM/LS» Monte
4 bedrooms

580 m²

Total area

310 m²

Internal

270 m²

External



Villa «VX/VS» Victoria



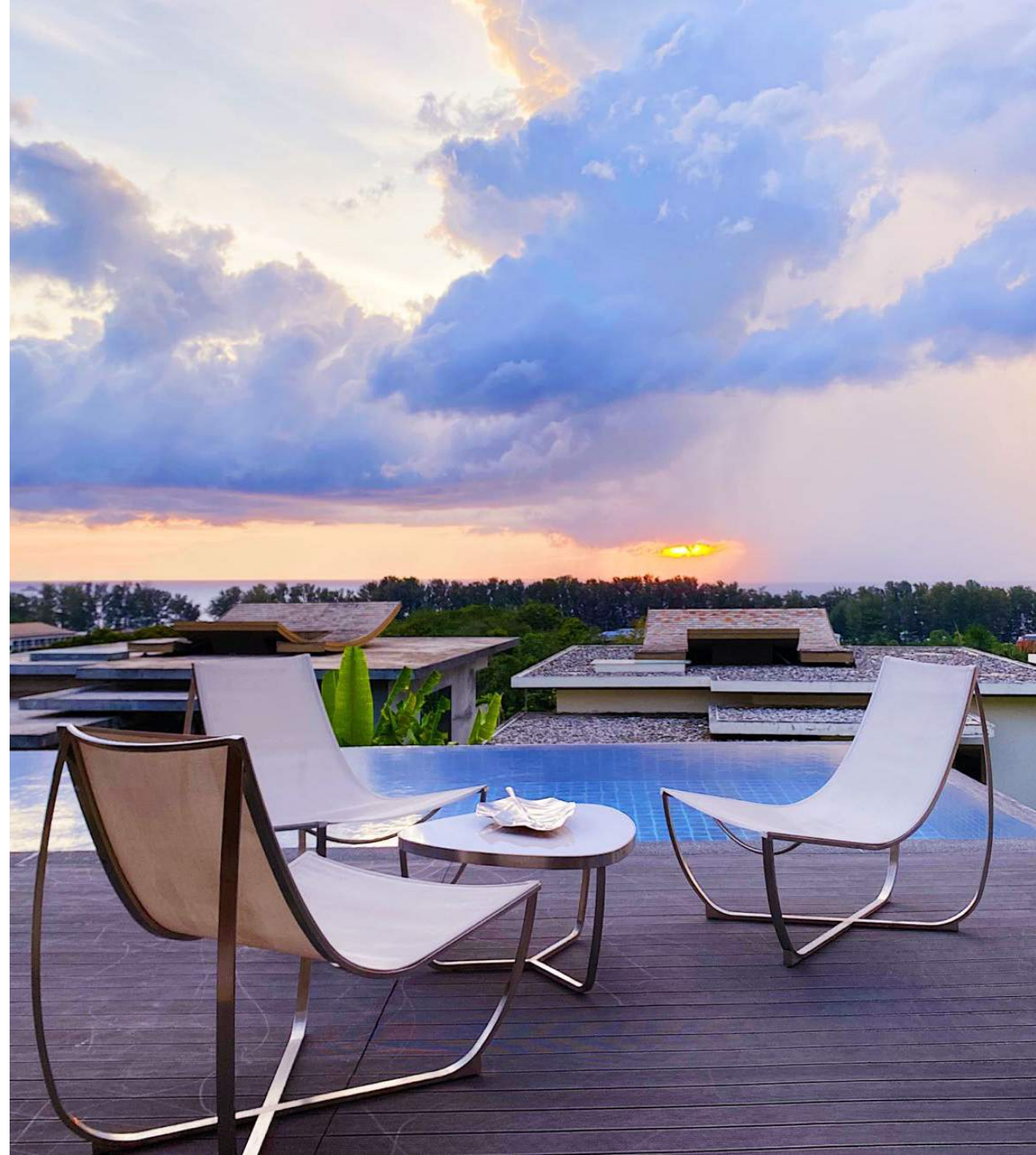
Villa «VX/VS» Victoria

3 bedrooms

360 m² Total area

210 m² Internal

150 m² External



Villa «VX/VS» Victoria

3 bedrooms

Following the gently sloping contours of the land, these charming villas are the closest to the beach. They have a compact square shape ideal for a smaller family.

Still very spacious with a total space of about 360 square meters, they have an open-plan

living, dining, and kitchen area on the top floor.

Full sea views from the upper floor, a picturesque waterfall in a 9x4 meters swimming pool, and large terraces downstairs complement the beautiful finishing and timeless elegance of these chic villas.

The lower floor offers three bedrooms with en-suite bathrooms and walk-in wardrobes.







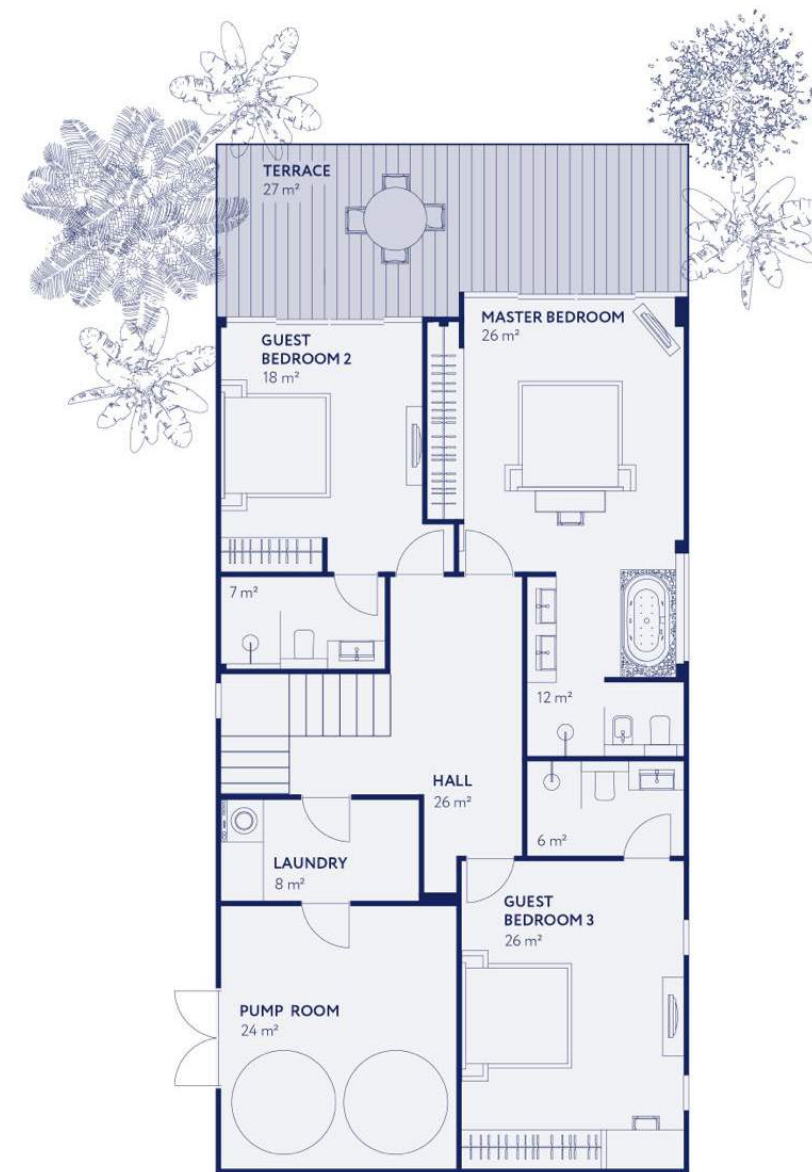
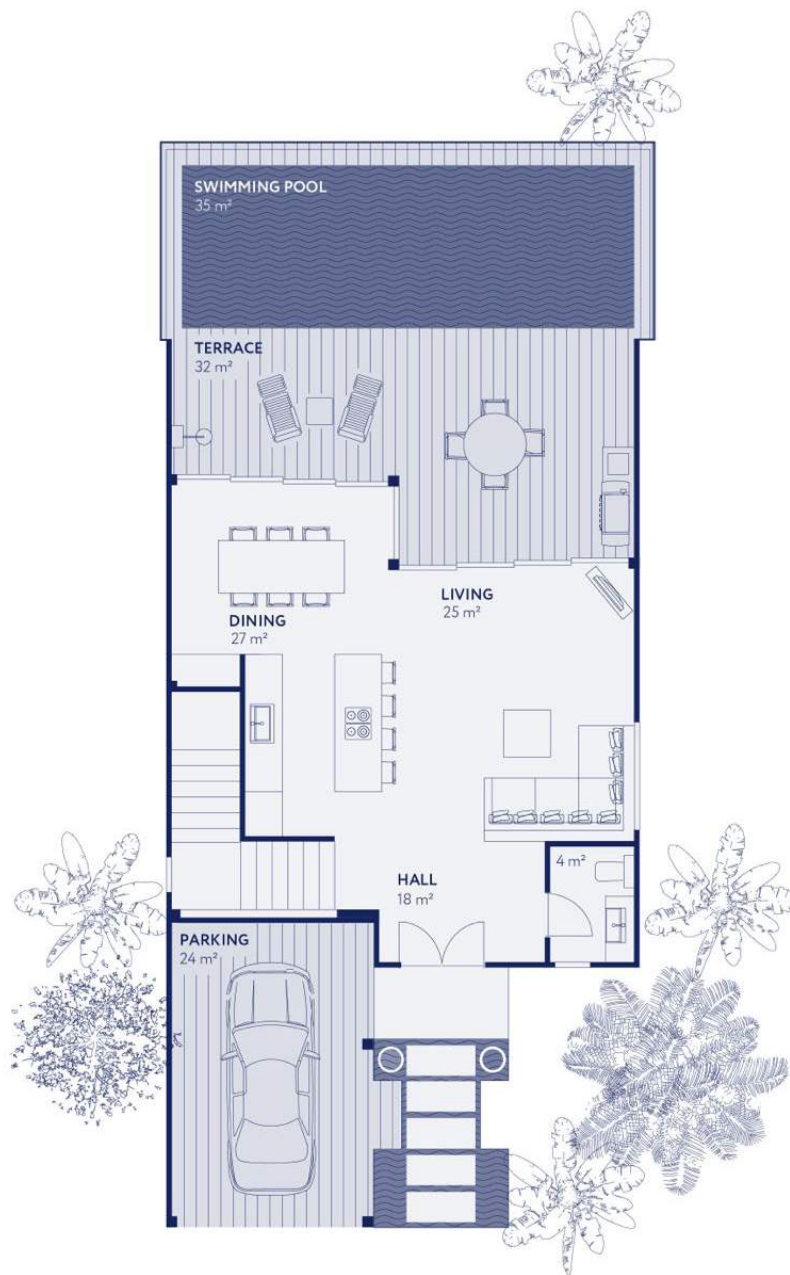


Villa «VX/VS» Victoria
3 bedrooms

360 m²
Total area

210 m²
Internal

150 m²
External





Sergey Nesterenko

Developer

Over 30 years of experience in real estate and international law and consulting: international investments, setting up and legal support of companies in a wide range of jurisdictions, tax planning, and relocation of individuals and legal entities.

Sergey has an extensive background in organizing businesses in over 50 countries. Founder and board member of projects in real estate, hospitality, consulting, and education.

Speaker and author for business and law media.

First arrived in Thailand in 1995, this country became a second home for his big family and simultaneously a place for doing business. Vista del Mar — Sergey's third development project in Phuket, in addition to similar businesses in Montenegro, Bulgaria, and Finland.



Sergey Nesterenko Jr.

Director of Sales

Over a decade of experience in residential and resort real estate, as well as the restaurant and hotel industries. Sergey gained valuable international exposure by the age of 30 with an impressive background working and living in different countries — Switzerland, the United States, Russia, and Singapore.

Growing up visiting Phuket as a tourist, Sergey continued his passion for the island by obtaining a hospitality degree

in Switzerland and later working in one of Southeast Asia's finest hotels.

After spending two years in Moscow's luxury real estate industry, Sergey joined the family business in 2022 to bring his extensive knowledge and experience to Vista del Mar. He is dedicated to improving the project's product line and providing exceptional client services while catering to the needs of the discerning international public.



Sergey Nesterenko, Director of Sales
sales@vistadelmarphuket.com
+66 99 404 3 123

Vista del Mar
— PHUKET —